



**BioChain Incorporated**

*Happiness for researchers*

# Product Brochure

 [info@biochain.in](mailto:info@biochain.in)

## About Us

**BioChain Incorporated**, established in 2013, proudly develops & commercializes innovative technologies and tools for life science research. We are committed to providing exceptional products that facilitate the discovery of mechanisms underlying cell function and disease.

Our unique, cutting-edge products are trusted and utilized globally in the research laboratories of universities, government institutes, & leading biotechnology and pharmaceutical companies.



D-682, BM, Chittaranjan Park  
New Delhi-110019, India.



+91-011-41543673

# Portable X- Ray Machine For Vet (Analouge)

- Model D04 / D05



## Features :

- Simple Stand design with wheels.The mobile stand is flexible & convenient to meet various position.



- The suitcase can be placed on the main X-ray machine. There are hand switch control, remote control, you can choose different exposure control and also it's easy to transport & carry cause of special compact structure.



## Features :



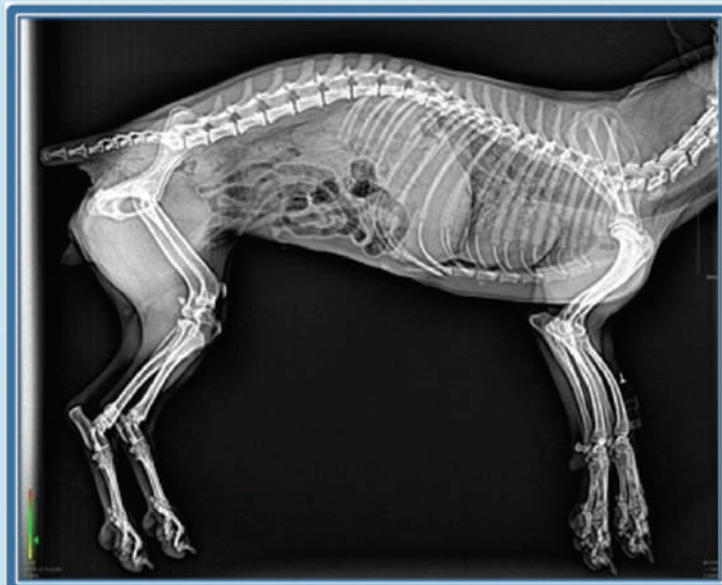
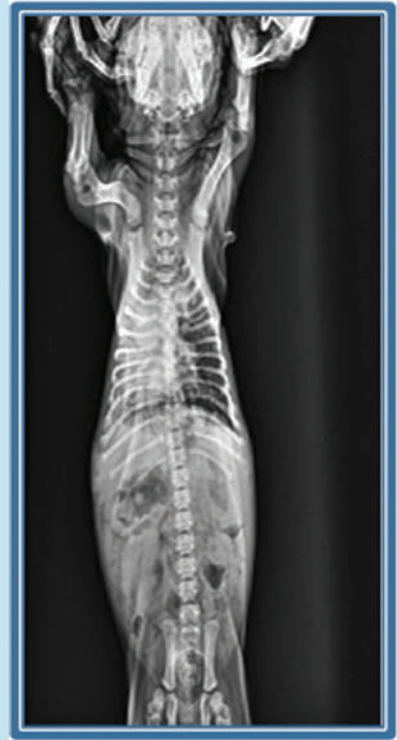
- It can be widely used for equine/large animal, & for mixed animal practices, easy to use, ultra-durable, and create digital images of superior quality.
- Deft and concise.
- 6 periods of digital LED display.
- Failure, self-protection, self-diagnosis.
- High precision control of tube voltage, tube current.
- 48 kinds of presupposed anatomy memory pattern choice.
- Accuracy control method of simulation & double digital loops.
- X-ray tube complete surrender by lead for protect X-ray leaking.
- Exposure by hand switch.
- Exposure by remote control.
- Exposure by touch screen.



10.4 Key Console



## Image Gallery :



## Specification :

Main Component		Tech Spe.
Generator	Voltage	AC220V/110V±10%
	Power	4kW/5kW
	kV Range	40~110kV
	mA Range	10~60mA/10~100mA
	mAs Range	0.2~200mAs
	Working Frequency	≥40kHz
	Exposure time	0.01S~3.2S
X-ray tube	Anode heat storage	56KHU
	Focus	1.6m/1.8m
	Inherent filtration	1mm Al/75Kv
	Light source	LED
Key Console	Dimension	10.4inch
Physical Spe.		
Main Unit	Weight	18.8 kg
	Dimension	290×260×230 mm




# Get in Touch

## Head Office:

 D-682 , BM , Chittaranjan Park  
New Delhi-110019 India

 [biochain@biochain.in](mailto:biochain@biochain.in), [info@biochain.in](mailto:info@biochain.in)

 +91-011-41543673

## Other Locations:


### Bangalore

 [bangalore@biochain.in](mailto:bangalore@biochain.in)

### Bhubaneswar

 [bhubaneswar@biochain.in](mailto:bhubaneswar@biochain.in)

### Kolkata

 [kolkata@biochain.in](mailto:kolkata@biochain.in)

### USA

 [usa@biochain.in](mailto:usa@biochain.in)



D-682 , BM , Chittaranjan Park  
New Delhi-110019, India.



+91-011-41543673



**BioChain Incorporated**

*Happiness for researchers*

Visit Our Website



D-682, BM, Chittaranjan Park  
New Delhi-110019, India.



+91-011-41543673